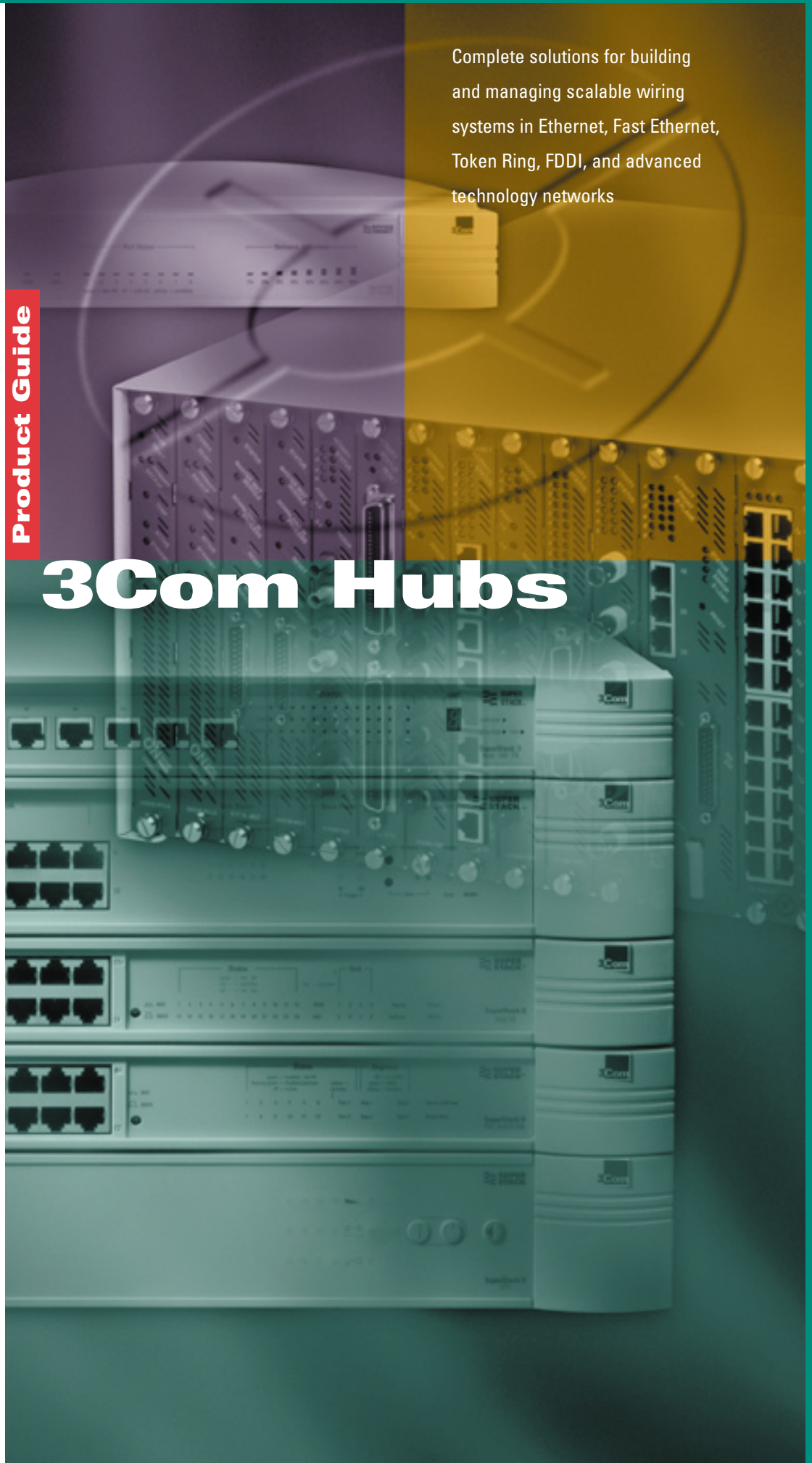




Product Guide

Complete solutions for building and managing scalable wiring systems in Ethernet, Fast Ethernet, Token Ring, FDDI, and advanced technology networks

3Com Hubs



Transcend® Network Management

A Breakthrough in Correlation and Control

The distinctive Transcend architecture lets you build complete management systems today, while leveraging resources so you can cost-effectively expand services tomorrow.

The basis for 3Com management advantages is the robust and comprehensive three-level Transcend architecture.

- SmartAgent® management agents are the foundation of this structure. Built into 3Com products from network interface cards to bridge/routers, these agents automatically gather and correlate information from every device while incurring minimal network traffic overhead.

- In the middle are open, industry-standard SNMP-based management platforms for Windows and UNIX, platforms that include SunNet® Manager, HP OpenView®, and IBM NetView® for AIX. These platforms consolidate SmartAgent intelligence and support the high-level Transcend applications.

- At the top layer is applications software that integrates management functions through the easy-to-use graphical interface to SmartAgent intelligence. Choose between Transcend Workgroup Manager, for a total picture of workgroup activity, or Transcend Enterprise Manager, for comprehensive control of all your network hardware, including internetworking and backbone devices and remote office installations—whichever Transcend application fits your environment best.

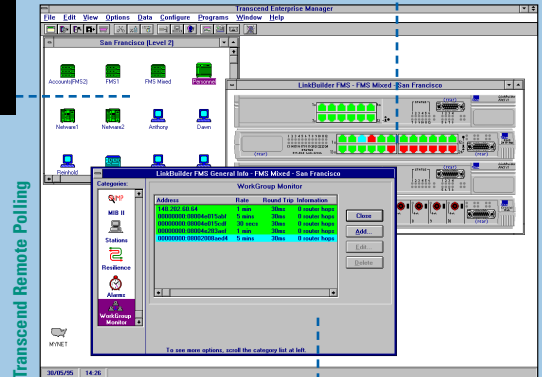
Distributed SmartAgent intelligence provides a host of powerful features for integrated network management. For example, SmartAgents handle remote polling for the network, localizing polling traffic and reducing demands on network bandwidth and console time. Similarly, the Transcend Action on Events feature lets you localize and automate tasks according to preset standards, also saving bandwidth and valuable administrative time.

No matter what your management environment, Transcend provides the same look and feel across all applications and network device types. This means greatly simplified comparison and analysis of management information, allowing you to troubleshoot and optimize network performance more effectively.

And to ensure smooth incorporation of new technologies, 3Com management applications are an integral part of Transcend Networking, 3Com's comprehensive vision of phased, cost-effective network growth.

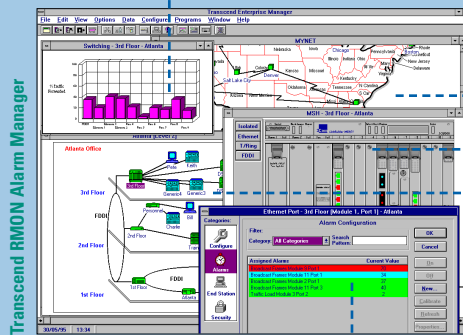
Automatic discovery of network devices produces a graphic for easy review.

Device rendering shows real-time interface status.



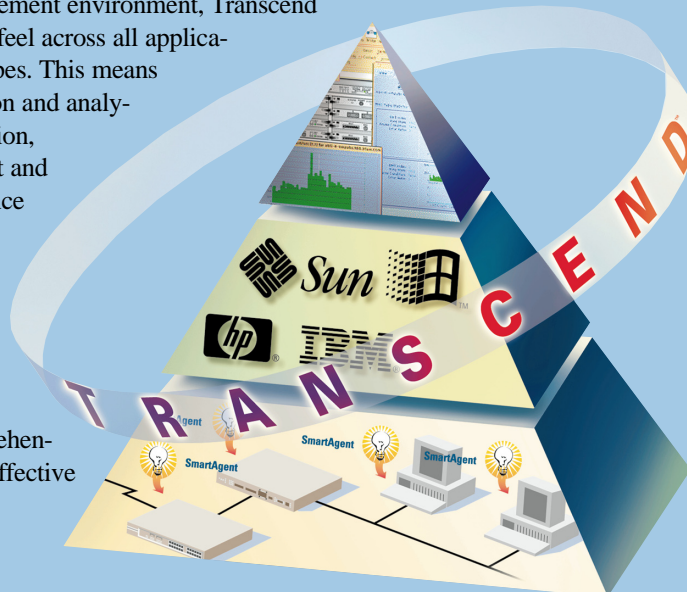
The Remote Polling interface for a workgroup lets the administrator make changes and also monitor the results of time-saving automatic SmartAgent polling.

Graphic views of device statistics simplify analysis.



Three-level hierarchical views allow easy navigation to particular devices and ports.

An RMON Alarm Manager interface provides tools to set alarms against many ports and devices—minimizing repetitive tasks. The interface also shows the status of currently set alarms.

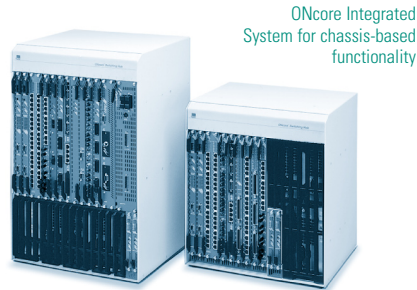


Ordering Information

Transcend Enterprise Manager Version 5.0 for Windows®	CD-ROM	3C15010E
Transcend Enterprise Manager Version 4.0 for UNIX®	CD-ROM	3C27850D
Transcend Workgroup Manager Version 5.0 for Windows	CD-ROM	3C15000F
Transcend Remote Boot and Configuration Services Version 2.0 for SunNet Manager	CD-ROM	3C6430A
Transcend ONdemand NCS for Windows Desktop with HP OpenView for Windows for ONCore® and ONline™ OND-DD-W-HP		

Why Choose 3Com Hubs?

In today's diverse and rapidly evolving network marketplace, 3Com hubs excel at keeping networks reliable, responsive, and dynamic. Whether you're dealing with a small workgroup at a remote site or a large central network comprising mixed technologies, 3Com hubs enhance your environment with a comprehensive set of industry-leading features, providing the manageability, resilience, and performance you need to accommodate network growth and change.



Transcend Networking Architecture

At the heart of these benefits is 3Com's Transcend Networking architecture. Transcend is our strategic roadmap and technology highway to our guiding vision of pervasive global data networking—the ability to link all users anytime, anywhere. Meaning step-by-step growth, simplified management, and scalable performance.

Versatile, Robust, Manageable

Implementing the Transcend Networking architecture, 3Com hubs meet real-world challenges with a choice of products targeted for all types of business needs.



SuperStack II Port Switch Hub for software-based LAN segmentation

- Our versatile, fault-tolerant, multi-function hubs let you mix LAN switching and ATM technologies in a single chassis, tailoring bandwidth and services to the requirements of individual users and groups.
- SuperStack™ II Ethernet, Fast Ethernet, and Token Ring hubs provide flexible, fault-tolerant workgroup solutions that offer SNMP manageability and comprehensive RMON support, plus extensive options for further network expansion.

- OfficeConnect™ Ethernet hubs, designed for the small office environment, are easily installed and provide silent, dependable operation in a stackable footprint no larger than a videocassette.

A World-Class Company

The company behind these offerings has over 16 years of experience in providing local and wide-area solutions. Today we're among the world's largest and fastest growing data networking companies. 3Com Corporation combines cutting-edge research and development with world-class manufacturing facilities and an international service and support infrastructure. With more than 70 offices in 30 countries serving over 25 million network users, we deliver network solutions wherever they're needed.



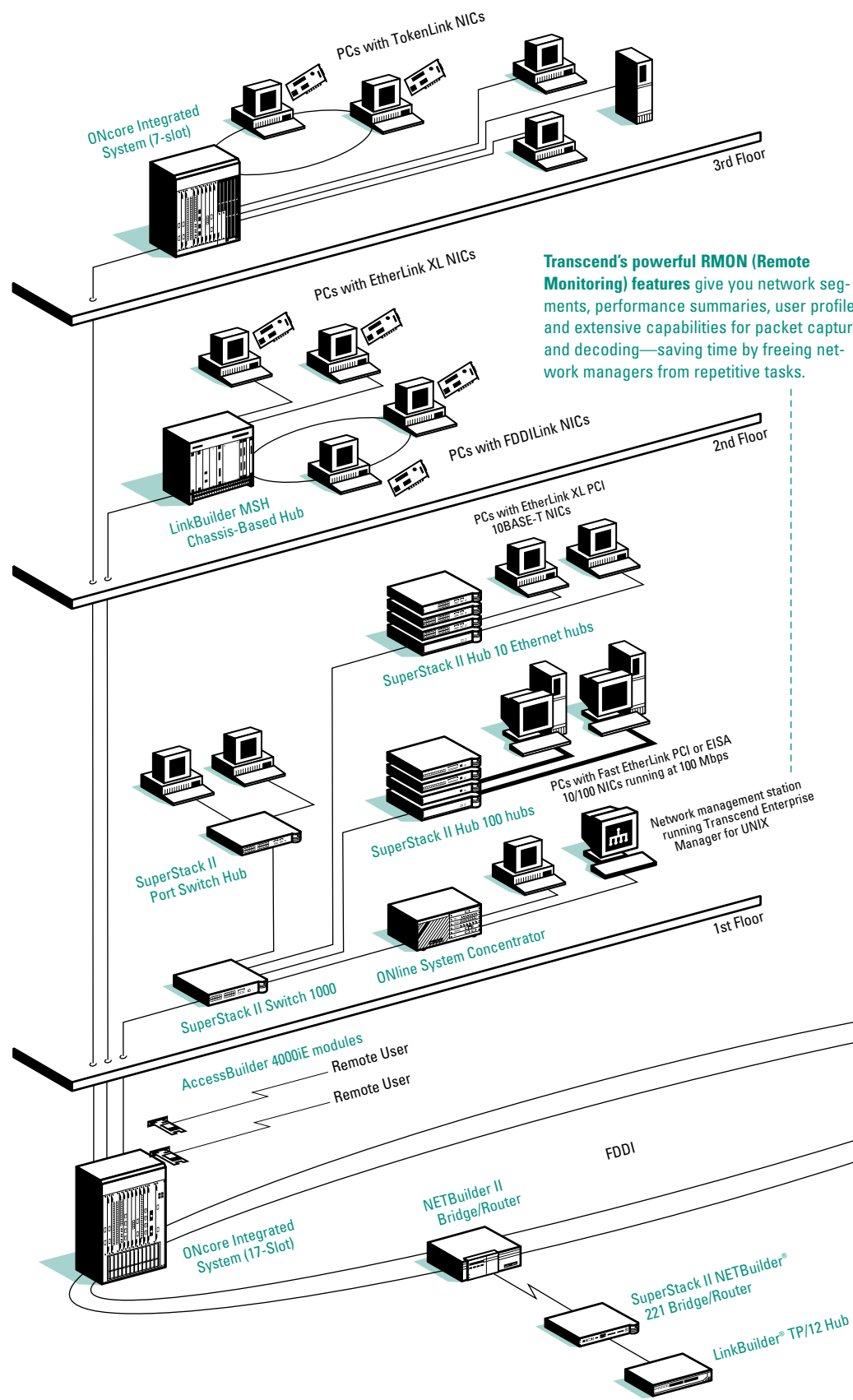
OfficeConnect hubs deliver Ethernet and Fast Ethernet connectivity in the small office

Contents

Deployment Scenario	2-3
3Com Hubs at a Glance	4
Stackable Hubs	
SuperStack II Hub 10	5
SuperStack II Port Switch Hub	6
SuperStack II Hub 100	7
SuperStack II Hub TR	8
OfficeConnect Hubs	
OfficeConnect Hub 8/TPO	9
OfficeConnect Hub 8/TPC	9
OfficeConnect Hub 8/TPM	9
OfficeConnect Hub 8/TP100	9
Multifunction Hubs	
ONcore Integrated System	10
ONline System Concentrator	11
LinkBuilder MSH	12
Other 3Com Hubs	
LinkBuilder FDDI Hub	12
Fixed Port Hubs	13
Transceivers and Interfaces	13
Quick Reference Guide	14

Networks That Go the Distance™

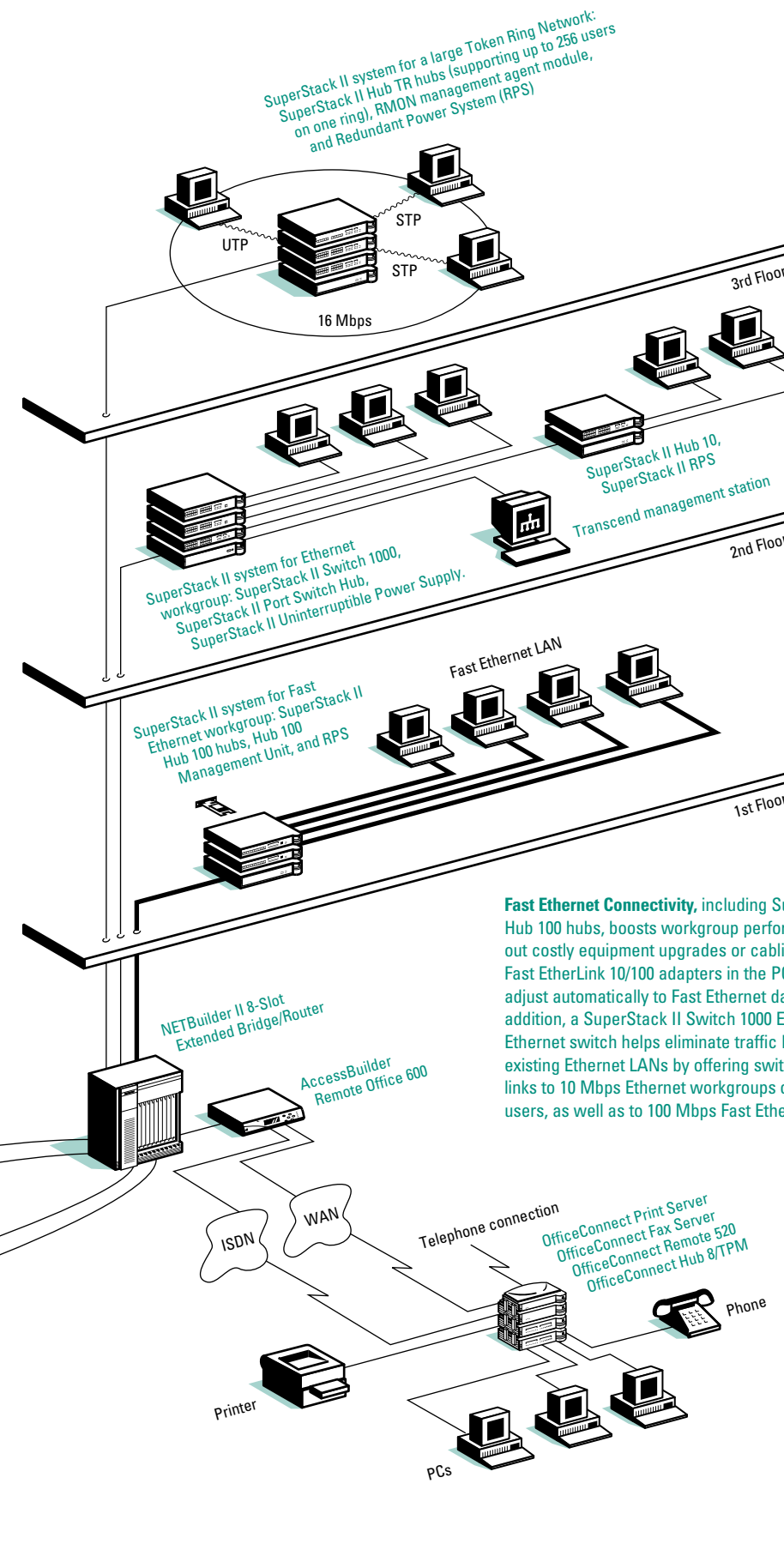
3Com's EtherLink XL, Fast EtherLink, EtherLink III, TokenLink, and FDDILink NICs provide high-performance network connections for Fast Ethernet, Ethernet, Token Ring, and FDDI LANs over any type of media. They offer the broadest driver and operating system support in the industry, and are backed by a lifetime warranty. The EtherLink XL, Fast EtherLink, EtherLink III, and TokenLink NICs are SNMP-manageable with SmartAgent intelligent agents, providing network control right down to the PC level.



Transcend's powerful RMON (Remote Monitoring) features give you network segments, performance summaries, user profiles, and extensive capabilities for packet capture and decoding—saving time by freeing network managers from repetitive tasks.

This mixed Ethernet and Fast Ethernet workgroup (using SuperStack II Hub 100, SuperStack II Switch 1000, ONline System Concentrator, SuperStack II Port Switch Hubs SuperStack II Hub 10, and Uninterruptible Power System) provides flexible choices for connectivity using mixed networking technologies, all with integrated SNMP management.

ONcore Integrated System or NETBuilder II bridge/routers provide collapsed backbone solutions that centralize network connections. The high-speed backplane of each device operates as the network backbone. Advantages include centralized administration and higher aggregate throughput over the backplane.



Fast Ethernet Connectivity, including SuperStack II Hub 100 hubs, boosts workgroup performance without costly equipment upgrades or cabling changes. Fast EtherLink 10/100 adapters in the PCs and servers adjust automatically to Fast Ethernet data rates. In addition, a SuperStack II Switch 1000 Ethernet/Fast Ethernet switch helps eliminate traffic bottlenecks in existing Ethernet LANs by offering switched Ethernet links to 10 Mbps Ethernet workgroups or individual users, as well as to 100 Mbps Fast Ethernet ports.

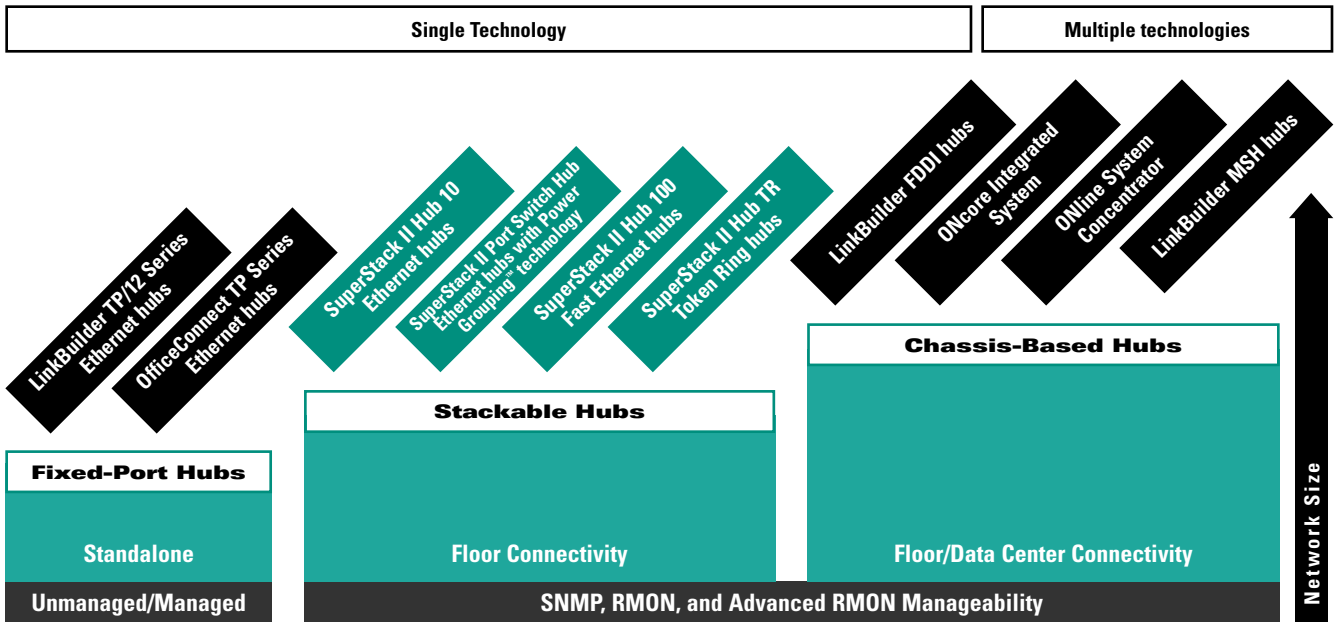
SuperStack II systems interconnect a range of media types, LAN and WAN technologies, and user sites, creating an integrated networking system that makes it easy to manage growth. In this example, SuperStack II units provide Ethernet, Fast Ethernet, Token Ring, and FDDI connectivity on the floors and in the branch offices. Highly robust, the stackable design can be readily scaled in economical steps, incorporating both added capacity and newer technologies as needs occur.

OfficeConnect hubs, designed for the small office, offer quick installation and provides silent, dependable operation in a small footprint. In this example, an OfficeConnect hub participates in a small office productivity solution that includes fax and print servers and an OfficeConnect Remote access router for forging a fast, economical ISDN WAN link to the central site.

Port switching—Power Grouping™ technology—simplifies the process of segmenting workgroups with simple, software-only techniques. Implemented in the SuperStack II Port Switch Hub, ONcore Integrated System, and ONline System Concentrator, port switching (also known as Electronic Patch Panel) makes it easy to balance traffic loads among logically defined network segments, providing additional bandwidth both to workgroups and individual power users.

Boundary Routing® system architecture transfers the complexity of router administration from remote offices to the central site, saving administrative time and hardware costs. 3Com's Boundary Routing software runs on NETBuilder II routers at the central site, and on an economical SuperStack II NETBuilder bridge/router at each remote site.

3Com Hubs At a Glance



SuperStack II

stacked system, strengthen it with uninterruptible and redundant power systems, and manage it all with Transcend management software.

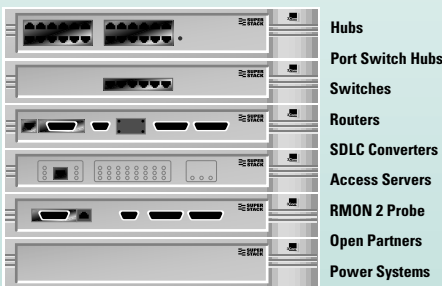
As an important part of 3Com's Transcend Networking framework, SuperStack II will meet your evolving network needs—future-proofing your network investment.

A single SuperStack II system provides connections for a range of network environments and protocols: Ethernet, 100BASE-T Fast Ethernet, Token Ring, FDDI, ISDN, X.25, Frame Relay, and ATM. Depending on your needs, you can build SuperStack II systems for virtually any network environment. Capabilities include:

- Shared and Port Switched hubs for flexible workgroup connectivity with SNMP management
- Industry-leading physical layer support for Token Ring networks

- Full RMON support for Ethernet, Fast Ethernet, and Token Ring networks, as well as a dedicated RMON2 Probe
- Full range of switches to boost performance in high-speed client/server LANs
- Full, multiprotocol network access for teleworkers or users at other off-site locations
- Routing between central site and branch offices using innovative Boundary Routing® architecture or conventional routing software for multiple WAN choices, including ISDN
- SNA-to-LAN conversion linking local and remote offices to an SNA host system
- Choice of power systems to ensure uninterrupted network operation

For smaller offices of less than 20 users, our OfficeConnect™ products can be used to complement SuperStack II.



3Com's SuperStack II system gives you a flexible, cost-effective connectivity solution for local, wide area, and SNA networks. You can combine diverse technologies and network services in one

SuperStack II Hub 10 hubs provide all the media flexibility, manageability, and economy of stackable hubs, plus built-in resilient links and advanced features like bridging and security. The hubs are excellent for departmental and remote office connectivity, and are fully compatible with SuperStack II Hub 10 products. They are also part of 3Com's SuperStack II integrated system, a complete set of hardware and software products specifically designed for building and managing high-performance networks.

■ **Slide-in SNMP and RMON Management.** One optional, user-installable management module lets you manage an entire stack of hubs with full RMON capability.

■ **Advanced RMON module.** For users with more demanding requirements, the Advanced RMON module provides the power and storage required for heavily loaded, mission-critical LANs that need considerable statistical analysis.

■ **Media choices.** Single- or mixed-media stacks may be created with 12-port and 24-port RJ-45 twisted-pair, 24-port

Telco twisted-pair, and 6-port ST fiber hubs.

■ **Unmanaged bridge.** The choice of an optional slide-in bridge module—the Bridge MicroModule—enables full local bridging capability.

■ **Security.** A number of easy-to-use features, such as Need To Know and Disconnect Unauthorized Device, protect the network from security breaches.

■ **SuperStack II functionality.** The Hub 10 integrates seamlessly with other products in 3Com's SuperStack II system, including routers, switches, and a complete suite of power system products for ensuring uptime for up to four SuperStack II units.

■ **Reliability.** A robust design ensures maximum uptime. All SuperStack II Hub 10 hubs are backed by a +5 Lifetime Limited warranty.

■ **Resilient Links.** Backup links can be set up for added redundancy.

■ **Increased port density.** Eight hubs can be stacked to provide up to 208 ports for growing networks.



System Solutions

SuperStack II Hub 10 12-Port Managed TP (1 SuperStack II Hub 10 12-Port TP hub, with 1 installed SuperStack II Hub 10 Management Module) 3C16673B

SuperStack II Hub 10 48-Port Solution TP System (4 SuperStack II Hub 10 12-Port TP hubs, 1 SuperStack II Hub 10 Management Module, 3 Hub Expansion Cables) 3C16674B

SuperStack II Hub 10 48 TP System/24 (2 SuperStack II Hub 10 24-Port TP Hubs, 1 SuperStack II Hub 10 Management Module, 1 Hub Expansion Cable) 3C16675B

Accessories

SuperStack II Uninterruptible Power System
US Version 3C16010
International Version 3C16011
Japanese Version 3C16012

SuperStack II Redundant Power System 3C565047A

Hub Expansion Cable 3C625

For backbone connections, please see the separate listing of Transceiver Interface Modules on page 13.

■ **Backbone links.** Optional transceiver interfaces provide male and female AUI, BNC coaxial, TP, 10BASE-FB, and ST fiber backbone connections.

Ordering Information

SuperStack II Hub 10 Hubs and Interfaces

SuperStack II Hub 10 12-Port TP Hub (12 shielded RJ-45 TP connectors, 1 AUI port or 1 transceiver port) 3C16670A

SuperStack II Hub 10 24-Port TP Hub (24 shielded RJ-45 TP connectors, 1 AUI port and 1 transceiver port) 3C16671A

SuperStack II Hub 10 6-Port Fiber Hub (6 ST fiber connectors, 1 AUI port and 1 transceiver port) 3C16665A

SuperStack II Hub 10 24-Port Telco Hub (2 50-pin Telco connectors, 1 AUI port, 1 transceiver port) 3C16672A

Management and Bridge Modules

SuperStack II Hub 10 Management Module 3C16630A

SuperStack II Hub 10 Advanced RMON Module 3C16332

LinkBuilder Bridge MicroModule 3C16060

Product Highlights

Ports per Unit	12 or 24 UTP/STP ports, 6 ST fiber ports, or 24 telco ports
Media Interfaces	AUI thick Ethernet, 10BASE-T/RJ-45 UTP/STP, ST fiber, 50-pin telco <i>LinkBuilder FMS Coax:</i> BNC thin Ethernet
Total Number of Units in Stack	Up to eight units operating as one stack that can be managed by one management module
Optional Module Types	Basic and advanced SNMP RMON management, bridge micro-module, transceiver interfaces, redundant power, uninterruptible power, -48V DC power
Management	Transcend applications, featuring SuperStack View, support this product in Windows and UNIX environments
Service and Support	+5 Lifetime Limited Warranty



+5 Lifetime Limited Warranty

3Com's new +5 Lifetime Limited Warranty provides a full 5 years of advanced hardware exchange from your date of purchase in accordance with 3Com's standard terms and conditions. To qualify, you must submit the appropriate product warranty registration card to 3Com. After the initial 5 year period, the warranty reverts to 3Com's standard lifetime limited warranty. The +5 Lifetime Limited Warranty is not offered or is void where restricted or prohibited by law.



SuperStack II Port Switch Hub

The SuperStack II Port Switch Hub takes workgroup hubs to a new level of performance, flexibility, and reliability.

Integral port switching software—Power Grouping technology—lets you easily assign individual users to any of the hub's four internal segments. This allows flexible allocation of bandwidth among users and simplifies moves, adds, and changes on the network.

With its built-in SNMP and RMON management, the SuperStack II Port Switch Hub extends network control. It also provides advanced fault-tolerance by incorporating redundant management, optional hot-swap functionality, and uninterruptible and redundant power systems.

The SuperStack II Port Switch Hub is part of 3Com's SuperStack II integrated system. With SuperStack II, you can combine diverse technologies and network services in one stacked system, strengthen it with resilience and a power system, and manage it all with Transcend software management applications.

■ **Port switching—Power Grouping technology.** Each port is switchable among four different backplane segments—

with a possible total of 40 segments per stack.

■ **RMON management.** All nine groups of Remote Monitoring (RMON) are available on all segments simultaneously for extensive diagnostics and monitoring of hub activity.

■ **Transcend Management.** Built-in software ensures full integration with network-wide 3Com management applications.

■ **Fault-tolerance.** Resilient links, redundant management, and “live” addition of new units ensure system reliability.

■ **Hot-swap capability.** Optional Cascade unit allows changing of units anywhere in the stack while it remains fully operational.

■ **Integral security.** Easy-to-enable security features such as Need to Know and Disconnect Unauthorized Device protect data and LAN resources.

■ **Redundant Power.** Optional Redundant Power System and UPS maintain continuous operation.

■ **VLAN ready.** Allows the creation of end-to-end VLANs across the whole network infrastructure.

Ethernet hubs that incorporate port switching functionality to boost network performance easily and affordably



Ordering Information

SuperStack II Port Switch Hub

Port Switch Hub 12-port TP	3C16405
Port Switch Hub 24-port TP	3C16406

Accessories

Port Switch Hub Cascade Cable (30 mm/1 foot)	3C16420
Port Switch Hub Cascade Cable (1 m/3 feet)	3C16421
Port Switch Hub Cascade Cable (3 m/9 feet)	3C16422
Port Switch Hub Hot-Swap Cascade Unit	3C16430
SuperStack II Uninterruptible Power System	
US Version	3C16010
International Version	3C16011
Japanese Version	3C16012
SuperStack II UPS Ethernet Management Card	3C16020
SuperStack II UPS Token Ring Management Card	3C16021
SuperStack II Redundant Power System	3C565047A

For backbone connections, please see the separate listing of Transceiver Interface Modules on page 13.

Product Highlights

Ports per Unit	12 or 24 Ethernet TP ports
Media Interfaces	10BASE-T/RJ-45
Total Units per Stack	Ten units per stack; up to 260 user ports per managed stack
Optional Module Types	Hot-Swap Cascade Unit; transceiver interface modules for BNC, AUI, Fan-Out, fiber/ST, and 10BASE-FB/ST; bridge micromodule
Management	Transcend applications, featuring SuperStack View, support this product in UNIX and Windows environments
Service and Support	+5 Lifetime Limited warranty



+5 Lifetime Limited Warranty

3Com's new +5 Lifetime Limited Warranty provides a full 5 years of advanced hardware exchange from your date of purchase in accordance with 3Com's standard terms and conditions. To qualify, you must submit the appropriate product warranty registration card to 3Com. After the initial 5 year period, the warranty reverts to 3Com's standard lifetime limited warranty. The +5 Lifetime Limited Warranty is not offered or is void where restricted or prohibited by law.

3COM
**SUPER
STACK**

SuperStack II Hub 100 hubs combine the performance advantages of 100 Mbps Fast Ethernet technology with the cost-effectiveness, convenience, and easy manageability of a stackable hub platform. These scalable hubs allow you to increase port density, enhance system reliability, and add SNMP management while keeping your initial Fast Ethernet investment low. You also get the flexibility of 3Com's SuperStack II system architecture, which lets you use your SuperStack II Hub 100 hubs along with other SuperStack II devices in a single managed stack.

■ **Enhanced performance.**

Full 100 Mbps connectivity increases shared bandwidth by an order of magnitude compared to ordinary Ethernet.

■ **SNMP management.** The optional SuperStack II Hub 100 Management Unit delivers full SNMP management. 3Com's Transcend applications let you administer hub ports and adapters together as one system.

■ **Flexible port density.** Up to eight SuperStack II Hub 100 hubs can be stacked together to provide the highest number of ports at a low cost. This allows for greater flexibility in network design.

■ **SuperStack II functionality.**

Seamless integration means the hub can operate smoothly with other hubs, switches, and routers in one easily managed stack.

■ **Outstanding reliability.**

A Disable on Power-Up switch offers network security and fault tolerance. In addition, the optional Uninterruptible Power System ensures maximum uptime.

■ **Remote monitoring**

(RMON) automates traffic to reduce network traffic and enhance network analysis. The optional Hub 100 Management Unit supports Stats, Alarms, Events, and History. In addition, you can set up resilient links and Disconnect Unauthorized Device.

■ **Complete Fast Ethernet solution.**

3Com offers a full complement of Fast Ethernet products, including switches, adapters, and bridge/router modules, for end-to-end 100BASE-T capabilities.

■ **Choice of backbone connections.**

A 100BASE-TX Transceiver Module with an RJ-45 connector for Category 5 UTP wiring or a 100BASE-FX Transceiver Module with a 62.5/125µ SC fiber connector permits a wider range of backbone/downlink connections.



■ **Simplified troubleshooting.**

For quick analysis and resolution of problems, three LEDs per hub port indicate traffic, port partition, and link status.

Ordering Information

SuperStack II Hub 100 Hubs and Interfaces

SuperStack II Hub 100 100BASE-TX (12 unshielded RJ-45 TP connectors, 1 transceiver port) 3C250A-TX/I

SuperStack II Hub 100 BASE-TX 48-Port System 3C250A-TX/I-4PK

SuperStack II Hub 100BASE-T4 (12 RJ-45 100BASE-T4 ports; class 1) 3C250-T4

SuperStack II Hub 100BASE-T4 48-Port System 3C250-T4-4PK

SuperStack II Hub 100 100BASE-TX Transceiver Module (1 unshielded RJ-45 TP connector) 3C252-TX

SuperStack II Hub 100 100BASE-FX Transceiver Module (1 62.5/125µ SC fiber connector) 3C262-FX

Management Unit

SuperStack II Hub 100 Management Unit 3C215A

Accessories

SuperStack II Uninterruptible Power System
 US Version 3C16010
 International Version 3C16011
 Japanese Version 3C16012

SuperStack II Redundant Power System 3C565047A

Replacement Expansion Cable 3C219

For backbone connections, please see the separate listing of Transceiver Interface Modules on page 13.

Product Highlights

Ports per Unit	12 RJ-45 ports
Media Interface	100BASE-TX, 100BASE-FX, 100BASE-T4
Total Number of Units in Stack	Up to eight units operating as one stack, for a total of 104 ports per stack
Optional Module Types	Management; transceiver interfaces for 100BASE-TX, 100BASE-FX; redundant power, uninterruptible power, and -48V DC power
Management	Transcend applications, featuring SuperStack View, support this product in Windows and UNIX environments
Service and Support	One-year limited warranty; consult your sales representative for terms



SuperStack II Hub TR

SuperStack II Hub TR hubs combine RMON-based management with the most advanced physical layer support in an affordable, expandable platform for mission-critical Token Ring networks.

The hubs provide advanced error recovery and fault isolation technology, jitter cancellation and retiming mechanisms, and sophisticated SNMP RMON network management.

■ **RMON-based network management.** Slide-in management modules on SuperStack II Hub TR hubs support the SNMP RMON MIB, allowing centralized troubleshooting with extensive network analyzer capabilities.

■ **Roving RMON.** A single network management module can be used to manage a stack of SuperStack II Hub TR hubs that are connected via Cascade Cables, but segmented into separate Token Ring networks.

■ **Zero Delay Lockout.** ZDL provides immunity from problems that most commonly disrupt Token Ring networks by detecting and locking out faulty or misconfigured stations before they can enter the ring.

■ **Distributed Recovery Intelligence.** DRI locally isolates device errors that can cause a station to beacon. This feature, combined with ZDL, provides “bullet proof” protection from common errors that would otherwise stop your network.

■ **Port and media flexibility.** Both models of the SuperStack II Hub TR hubs support fiber, UTP, and STP wiring to accommodate a range of cabling configurations and node densities—up to 260 users per ring.

■ **Plug-in expansion.** Easily-installed RI/RO modules let you expand your Token Ring LAN over fiber and/or copper media.

■ **SuperStack II functionality.** SuperStack II Hub TR hubs are part of 3Com’s SuperStack II system architecture, which allows stackable hubs, bridges, routers, switches, and SNA-to-LAN conversion devices to be easily integrated and managed as one system.

■ **Phase-Locked Loop retiming.** A PLL ASIC at each port ensures maximum signal strength for extended distances throughout your network. The design provides full retiming

Robust Token Ring hubs complete with RMON-based management



functionality on every port, and reliable 16 Mbps operation over all cabling types.

Ordering Information

SuperStack II Hub TR Hubs

SuperStack II Hub TR (12-Port) Hub (13 RJ-45 ports; 2 DB-15 cascade connectors; 1 redundant DC power connector; 1 AC line connector; one 10-inch Expansion Cascade Cable) 3C510510B

SuperStack II Hub TR (24-Port) Hub (25 RJ-45 ports; 2 DB-15 cascade connectors; 1 redundant DC power connector; 1 AC line connector; one 10-inch Expansion Cascade Cable) 3C510511B

Slide-in Management Modules

SuperStack II Hub TR RMON Management Agent Module 3C51050

SuperStack II Hub TR Advanced RMON Management Agent Module 3C510505

Slide-in RI/RO Expansion Modules

SuperStack II Hub TR Fiber RI/RO Module 3C510503

SuperStack II Hub TR Copper RI/RO Module 3C510504

SuperStack II Hub TR Copper/Fiber RI/RO Module 3C510506

SuperStack II Hub TR Fiber ONtruck Module 3C510513

SuperStack II Hub TR Copper ONtruck Module 3C510514

Accessories

SuperStack II Uninterruptible Power System
US Version 3C16010
International Version 3C16011
Japanese Version 3C16012

SuperStack II Redundant Power System 3C565047A

10-inch Expansion Cascade Cable 3C510507

8-foot Redundant Ring Cascade Cable 3C510508

4-foot Expansion Cascade Cable 3C510509

Product Highlights

Media Interfaces	RJ-45 UTP and STP Token Ring; fiber; DB-9 RS 232 for management
Optional Module Types	RMON management agent, advanced RMON management agent, copper ring in/ring out expansion, fiber ring in/ring out expansion, copper/fiber ring in/ring out expansion, redundant power, uninterruptible power, -48V DC power
Total Number of Units in Stack/Ring	Up to 20 (or 260 users)
Total Number of User Ports per Stack/Ring	From 12 to 260
Management	Transcend® applications, featuring SuperStack View, support this product in Windows and UNIX environments
Service and Support	Lifetime Limited warranty; see page 13



3COM SUPER STACK

OfficeConnect hubs are expressly designed to provide cost-conscious businesses with the basic foundation for an integrated system of small-office networking products. A choice of OfficeConnect hubs makes it simple for small offices to raise productivity by networking PCs and other computer resources, including other products in the OfficeConnect family. Or, you can use OfficeConnect hubs in a small standalone network.

The entry-level OfficeConnect Hub 8/TPO supplies eight shielded twisted-pair ports along with simple LEDs for network monitoring. Using an MDI-MDX switch on the eighth port, the OfficeConnect Hub 8/TPO permits connection of up to four hubs in series, for a total of 28 ports in a single, small-footprint stack. This OfficeConnect model offers the greatest economy for small offices wanting simple yet powerful networking.

For offices with plans to expand, the OfficeConnect Hub 8/TPC includes a ninth, coaxial port for connections to other networking devices. The coaxial port allows up to 30 hubs to be daisy-chained on a single segment. Front-panel Network Utilization LEDs provide at-a-glance monitoring of network loads.

The OfficeConnect Hub 8/TPM offers powerful SNMP management functions, including full RMON support via an embedded SNMP SmartAgent. Bundled with 3Com's Transcend Quick Configuration Manager for easy installation, the Hub 8/TPM is perfect for networks requiring more extensive management and convenient future expandability. The OfficeConnect Hub 8/TP100 is 3Com's answer to small office/entry level needs for Fast Ethernet solutions. With eight unmanaged 100BASE-TX RJ-45 ports, the Hub 8/TP100 is ideal for a small number of users requiring ten times the bandwidth of standard Ethernet. As with all members of the OfficeConnect family, the Hub 8/TP100 can be easily clipped to other OfficeConnect units, sharing with them the same ergonomics, compact size, and convenient diagnostic LEDs.

Complete Productivity Solution. As part of the OfficeConnect family of small-office network offerings, OfficeConnect Hubs provide the foundation for connecting users to OfficeConnect switches, ISDN access routers, and print, fax, and CD-ROM servers—providing complete small-office productivity.



Easy to Install and Use.

Install OfficeConnect hubs simply by plugging PC network cables into the ports on the hub and turning on the power.

Lifetime Limited

Warranty. 3Com guarantees OfficeConnect hubs, including the power adapter, for life.*

Full Compatibility. All OfficeConnect hubs are compatible with Novell® NetWare®, Microsoft Windows 95®, and other leading network operating systems, assuring you the widest range of available network applications and backward compatibility with existing office software.

Complete Network Control. The OfficeConnect Hub 8/TPM features the Transcend Quick Configuration Manager, which uses the familiar Windows interface to allow you to monitor the network and configure the hub.

*For more warranty information, see page 13.

Ordering information

OfficeConnect Hub 8/TPO (8 RJ-45 ports)	3C16700
OfficeConnect Hub 8/TPC (8 RJ-45 ports, 1 BNC port)	3C16701
OfficeConnect Hub 8/TPM (8 RJ-45 ports, 1 BNC port, and Transcend Quick Configuration Manager software)	3C16710
OfficeConnect Hub 8/TP100 (8 100BASE-TX ports)	3C16720

Product Highlights

Ports per Unit	8 STP ports; 1 BNC on 8TPC and 8TPM models
Media Interfaces	RJ-45 10BASE-T STP; BNC 10BASE2 coaxial port (on 8TPC and 8TPM models)
Total Number of Units in Stack	4 units in a stack
Management	Transcend Quick Configuration Manager included on OfficeConnect Hub 8/TPM; supports Transcend, SNMP, full RMON network applications
Service and Support	Lifetime Limited warranty. See page 13



ONcore Integrated System

All-in-one solution supporting shared LAN, switched LAN, and ATM connections

The ONcore Integrated System is 3Com's premier campus networking hub. The ONcore architecture delivers all-in-one networking functions, providing scalable migration from shared LAN to switched LAN to ATM in both the workgroup (edge), wiring closet, and the enterprise data center (backbone).

The multi-function ONcore, available in 7-, 10-, and 17-slot models, provides Ethernet, Fast Ethernet, Token Ring, FDDI, and ATM network interfaces. Fully capable of meeting the needs of the most demanding enterprise environments, ONcore's industry-leading fault-tolerant features ensure that your mission-critical applications stay up and running.

■ **Scalable Migration.** With over 11 Gbps of raw capacity, ONcore scales from a single shared Ethernet or Token Ring network to 2 Gbps of switched LAN capacity to 8 Gbps of ATM connectivity. As performance needs increase, ONcore allows you to microsegment up to eight Ethernet networks, 10 Token Ring networks, four

FDDI networks, four Fast Ethernet networks, and numerous isolated networks, all with full manageability.

■ **Flexibility.** ONcore's Electronic Patch Panel feature eliminates the need to re-cable hubs when doing routine moves/adds/changes. You move users from one network to another by clicking a mouse instead of dispatching staff to the wiring closet.

■ **Highest Reliability.** ONcore delivers industry-leading fault tolerance, maximizing the uptime of mission-critical applications. Hubs, modules, backbone links, power supplies, and management all can be backed up for complete resiliency across all protocols.

■ **Advanced Token Ring.** Phase-Locked Loop retiming per port, Zero Delay Lockout, Port Switching, and Advanced Distributed Recovery Intelligence provide maximum configuration flexibility and resilience in Token Ring environments.

■ **Uncompromised Manageability.** ONcore's distributed management architec-



ture holds two key benefits: it's highly reliable, and it doesn't occupy valuable chassis slots. Transcend Enterprise Manager and ONcore's out-of-band management, either local or remote, furnish the same level of control and statistics reporting. ONcore also supports RMON II for traffic management and protocol sniffing.

■ **Complete Enterprise Solution.** In addition to versatile campus network lines, ONcore expands network links to branch offices and individual remote users via a variety of WAN connectivity options and integrated AccessBuilder modules for remote LAN access.

ONcore Integrated System (10 slots, Enhanced TriChannel, RingChannel, FastChannel, and PacketChannel backplanes) 3C96010CH-AP

ONcore Integrated System (10 slots, Enhanced TriChannel, RingChannel, and SwitchChannel backplanes) 3C96010CH-AC

ONcore Integrated System (7 slots, Enhanced TriChannel, RingChannel, and FastChannel backplanes) 3C96007CH-A

ONcore Integrated System (7 slots, Enhanced TriChannel, RingChannel, FastChannel, and PacketChannel backplanes) 3C96007CH-AP

Modules

The ONcore Integrated System supports a wide range of modular options from the following categories:

- Ethernet Modules (shared and switched)
- Token Ring Modules
- FDDI modules (shared and switched)
- ATM Modules
- Management Modules
- AccessBuilder 4000iE Remote Access Server Modules
- Communications Server Modules

For detailed information on all ONcore modules, see the ONcore data sheets.

Product Highlights

Chassis	7, 10 or 17 slots
Media Interfaces	<i>Ethernet:</i> RJ-45 10BASE-T twisted pair, telco 10BASE-T twisted pair, BNC thin Ethernet, AUI thick Ethernet, ST fiber <i>Token Ring:</i> RJ-45 UTP/STP, ST fiber <i>FDDI:</i> RJ-45 twisted-pair, ST or MIC fiber <i>ATM:</i> 100 Mbps multimode fiber, 155 Mbps multimode fiber, single mode fiber, RJ-45 twisted pair
Module Types	Fault tolerance, management, network monitor, Ethernet RMON MultiProbe, Ethernet, Token Ring, ATM, routing, communications server, remote access server, all ONline modules
Management	3Com's graphical Transcend network management applications are available for the ONcore Integrated System for UNIX and Windows environments.
Accessories	Systems come with power supply, fault-tolerant controller, rack-mount kit, and cable tray

Ordering information

Chassis

ONcore Integrated System (17 slots, Enhanced TriChannel, RingChannel, and FastChannel backplanes) 3C96017CH-A

ONcore Integrated System (17 slots, Enhanced TriChannel, RingChannel, FastChannel, and PacketChannel backplanes) 3C96017CH-AP

ONcore Integrated System (17 slots, Enhanced TriChannel, RingChannel, and SwitchChannel backplanes) 3C96017CH-AC

ONcore Integrated System (10 slots, Enhanced TriChannel, RingChannel, and FastChannel backplanes) 3C96010CH-A

ONline System Concentrator

High port density concentrator ideal for micro-segmented shared LANs

The ONline System Concentrator gives your network complete flexibility by supporting multiple segments in a single, multiple-backplane chassis—up to three Ethernet, seven Token Ring, or four FDDI networks in all.

The ONline Concentrator comes in 17- and 6-slot versions, making it ideal for both large and medium-sized shared LAN workgroups. ONline's scalable architecture lets you choose the level of fault tolerance you need to protect your mission-critical applications.

■ **High-density connectivity.** The ONline chassis connects up to 360 Ethernet, 140 Token Ring, or 32 FDDI port connections with support for all standard media types.

■ **Flexibility.** ONline's switching (Electronic Patch Panel) technology allows you to make easy adds, moves, and changes—independent of physical

locations—from within the Transcend point-and-click graphical interface.

■ **Fault Tolerance.** ONline hubs incorporate load-sharing power supplies, hot-swappable components, cross-module redundancy, and a passive backplane free of active components vulnerable to failure. Choose the fault-tolerant features you need initially, and add others when you like.

■ **Robust management.** ONline's powerful network management agents scale from simple management to full RMON. In addition to Transcend management, ONline agents also offer extensive out-of-band management capabilities using an ASCII terminal, Telnet, or a modem.

■ **Multi-function versatility.** Other ONline modules enhance your network with a broad range of functionality, including packet switching, high-



speed bridging, WAN interfaces, and AccessBuilder remote LAN access.

Ordering Information

Chassis

ONline System Concentrator (17 slots, Load-Sharing Power Supply, Fault-Tolerant Controller) 3C95017C-LS

ONline System Concentrator (17 slots, Backup Power Capability, Fault-Tolerant Controller) 3C95017C

ONline System Concentrator (6 slots, Integrated Controller) 3C50006C-HC

ONline System Concentrator (6 slots, Integrated Controller, Backup Power Capability) 3C95006CH-HC-FT

ONline Fault-Tolerant Controller Module (LS version) 3C95000M-RCLS

Backup 325-Watt Power Supply (for 17-slot ONline) 3C95017PS-325

Backup 200-Watt Power Supply (for 6-slot ONline) 3C95006PS

Module Options

The ONline System Concentrator supports over 30 module options from the following categories:

- Ethernet Modules (all media)
- Token Ring Active and Passive Modules (all media)
- FDDI Modules (all media)
- Bridge and Router Modules
- AccessBuilder 4000iE and 4000iT Remote Access Server Modules
- Communications Server Modules

For detailed information on all ONline modules, see the ONline data sheet.

Product Highlights

Ports per System Concentrator	17-slot concentrator: 360 Ethernet, 140 Token Ring, or 32 FDDI 6-slot concentrator: 120 Ethernet, 40 Token Ring, or 16 FDDI
Media Interfaces	<i>Ethernet:</i> RJ-45 10BASE-T twisted pair, BNC thin Ethernet, 10BASE-FB fiber, 10BASE-FL fiber <i>Token Ring:</i> RJ-45 UTP/STP, ST fibers <i>FDDI:</i> RJ-45 twisted pair; MIC, ST fiber
Module Types	Fault-tolerance, management; <i>Ethernet:</i> media, security, management, RMON probe, terminal server, repeater, transceiver, switch/bridge/router <i>Token Ring:</i> media, 3174, bridge, management repeater <i>FDDI:</i> media, management <i>Internetworking:</i> multiprotocol WAN, edge router, remote access
Management	3Com's graphical Transcend network management applications are available for UNIX and Windows environments
Requirements	All systems come with power supply, fault-tolerant controller, rack-mount kit (ordered separately for 6-slot), and cable tray

LinkBuilder MSH™ is an extremely versatile 11-slot hub that can support up to 10 RMON managed Ethernet, five managed Fast Ethernet (100BASE-T), five managed Token Ring, and three managed FDDI workgroups on a variety of media types. It is ideal for floor distribution in large multi-technology, multi-services corporate networks.

■ Robust fault tolerance.

Distributed Repeater Architecture and resilient links eliminate a single point of failure in Ethernet LANs. Hot-swappable modules and redundant power supplies and fans keep the network up and running.

■ Distributed Management.

SmartAgent intelligent agents on connectivity modules include RMON to reduce management traffic on the backbone. One SNMP management module supports multiple networks and multiple LAN technologies. In addition, patented chip-based security provides data protection.

■ Full-performance bridging.

Optional Ethernet and Token Ring bridge modules make it easy to subdivide the network for better throughput, and to localize workgroup traffic to improve LAN manageability and resilience. Spanning Tree algorithm is supported.

LinkBuilder FDDI Hub

The LinkBuilder FDDI hub excels as an edge device in high-speed networking environments. With multiple options for copper and fiber media, the LinkBuilder FDDI hub provides up to 24 ports for connecting data center server farms or power-user workstations to the 100 Mbps FDDI backbone. Or, use the LinkBuilder FDDI hub to create standalone, high-performance workgroups needing a robust environment for bandwidth-hungry applications like CAD/CAM and digital imaging.

The LinkBuilder FDDI hub works with other 3Com FDDI products to maximize the potential of your FDDI installation. 3Com's FDDILink EISA network adapter cards, when connecting mission-critical servers to multiple LinkBuilder FDDI hubs, create MAC-level resilient links that protect against network downtime.

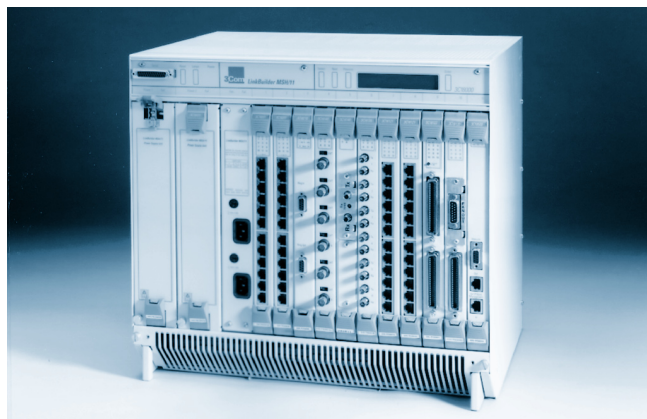
Easily scalable with hot-swappable module options, the LinkBuilder FDDI hub offers the best combination of port density and low cost available today.



Ordering Information

LinkBuilder FDDI	
LinkBuilder FDDI Base Unit (power supply, fan, and backplane)	3C780
LinkBuilder FDDI Management Module*	3C781
LinkBuilder FDDI 4-Port Fiber-Optic Module	3C782
LinkBuilder FDDI 6-Port STP Module	3C783
LinkBuilder FDDI 8-Port UTP Module	3C784
LinkBuilder FDDI Fiber and CDDI Module	3C785
Transcend LinkBuilder FDDI SmartAgent Module	3C779

*One Management Module is required for each operational base unit.



■ 10/100 Mbps switching and FDDI concentration.

The LinkSwitch 1200 Module provides high-performance, affordable Ethernet-to-FDDI switching to relieve client/server congestion. Optional FDDI concentrator modules allow high-bandwidth, multiple-media connections to groups of servers and workstations. An Ethernet-to-Fast Ethernet switching module can be used to relieve client/server congestion.

Ordering Information

LinkBuilder MSH Chassis and Management

11-slot chassis	3C18040
11-slot chassis with FDDI backplane	3C18041
Management Module	3C18500
375w Power Supply	3C18011
525w Power Supply	3C18012

Modules

The LinkBuilder MSH supports a wide range of modular options from the following categories:

- LinkBuilder MSH Ethernet modules
- LinkBuilder MSH Token Ring Modules
- LinkBuilder MSH Bridging and Switching Modules
- LinkBuilder MSH FDDI modules

For detailed information on all LinkBuilder MSH modules, see the LinkBuilder MSH data sheet. For backbone connections, please see the listing of Transceiver Interface Modules on page 13.

Product Highlights

Chassis	11 slots, media/management independent
Media Interfaces	<i>Ethernet:</i> RJ-45 10BASE-T twisted pair, BNC thin Ethernet, ST fiber, AUI thick Ethernet <i>Fast Ethernet:</i> 100BASE-FX, SC or 100BASE-TX, RJ-45 <i>Token Ring:</i> RJ-45 UTP/STP, DB-9 STP, ST fiber <i>FDDI:</i> RJ-45 twisted pair, fiber MIC
Module Types	Management, Ethernet secure repeater, Ethernet expansion, Ethernet bridge, Token Ring MAU, Token Ring RingBuilder, Token Ring bridge, Token Ring RMON probe, FDDI ports, FDDI RingBuilder, Ethernet/FDDI switching, Ethernet/Fast Ethernet switching, Ethernet switching expansion
Management	3Com's Transcend applications support this product in Windows and UNIX environments
Requirements	One chassis and one or two 375- or 525-watt power supplies must be ordered to create a complete product; installing two supplies provides load sharing for longer power supply life and backup power in case one supply fails
Service and Support	One year warranty

Other 3Com Hubs and Interfaces



LinkBuilder TP/12

Ethernet Fixed-Port Hubs

3Com's fixed-port Ethernet hubs deliver high-quality connectivity solutions at entry-level prices for smaller Ethernet networks. Simple to install and use, warranted by 3Com for life,* our fixed-port hubs feature value-added options for bridging, management, and backbone connections.

The LinkBuilder TP/12 offers 12 RJ-45 ports and an optional transceiver port that accommodates a LinkBuilder Bridge MicroModule or Transceiver Interface Module for backbone connections. The TP/12 excels at connecting small workgroups to departmental or enterprise LANs.

Product Highlights

Ports per Unit	12 twisted-pair
Media Interfaces	RJ-45, optional backbone interfaces: AUI, TP, BNC, fiber
Optional Modules	Bridge micromodule, transceiver interface modules
Service and Support	Lifetime warranty; warranty includes the power supply and the fan for the first year only

Ordering Information

LinkBuilder TP/12 Hub Twelve RJ-45	3C16170 ¹
LinkBuilder 19-Inch Rack Mounting Kit For LinkBuilder TP/12 only	3C16050

¹AUI, TP, coax, 10BASE-FB, and fiber-optic transceiver interface modules are also available for this product (see next column).



LinkBuilder Repeaters

3Com's LinkBuilder Repeaters let you connect coax, twisted-pair, and fiber cabling in a standard Ethernet network. An optional transceiver interface lets you add a third network segment. Offering reliability based on proven technology, these repeaters can be used in combination with any of 3Com's Ethernet hubs to provide a complete LAN solution.

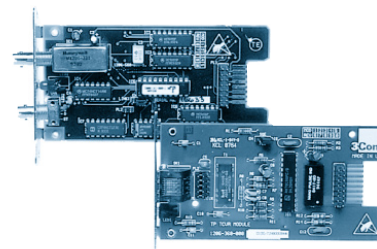
Product Highlights

Media Interfaces	1 AUI & 1 BNC or 1 AUI & 1 ST or 2 AUI
Indicators	Power status, packet reception, collision, partition
Service and Support	Lifetime warranty; Consult your sales representative for terms

Ordering Information

LinkBuilder AUI/BNC Repeater One AUI, one BNC	3C16210 ¹
LinkBuilder AUI/Fiber Repeater One AUI, one pair ST	3C16505 ¹
LinkBuilder AUI/AUI Repeater Two AUI	3C16200 ¹
LinkBuilder 19-Inch Rack Mounting Kit	3C16050

¹AUI, TP, fiber-optic, coax and fan-out transceiver interface modules are available for this product (see next column).



Fiber-Optic Transceiver Interface and TP Transceiver Interface

Transceiver Interface Modules for SuperStack II and LinkBuilder Ethernet Hubs and Repeaters

For convenient internal backbone additions and changes, these modules slide directly into LinkBuilder MSH, SuperStack II Hub 10, LinkBuilder TP/12 hubs, and LinkBuilder Repeaters.

Ordering Information

Transceiver Interface Modules	
AUI Transceiver Interface (1 female AUI connector)	3C1206-0
Fiber-Optic Transceiver Interface (1 pair of ST connectors)	3C1206-5
AUI Transceiver Interface (1 male AUI connector)	3C1206-4
Coaxial Transceiver Interface (1 BNC connector)	3C1206-6
TP Transceiver Interface (1 RJ-45 connector)	3C12063
10BASE-FB Transceiver Interface (One pair connectors)	3C12067

Lifetime Limited Warranty

Every 3Com hub—chassis-based, stackable, and standalone—is backed by our outstanding quality, service, and support. The following products are covered by a lifetime limited warranty:

SuperStack II family: SuperStack II Hub 10 Management Module, Bridge MicroModule, Transceiver Interface Modules, SuperStack II Hub TR hubs, RMON Management Agent Modules, and RI/RO Modules. (The SuperStack II Hub 10 and SuperStack II Port Switch Hub are covered by 3Com's +5 Limited Lifetime Warranty; see pages 5 and 6 for more details.)

OfficeConnect family: Hub 8/TPO, Hub 8/TPC, Hub 8/TPM, Hub 8/TP100.

LinkBuilder Family: TP/12.

Power supplies are warranted for one year. The lifetime limited warranty for the OfficeConnect hubs includes the power adapter. To qualify for the lifetime limited warranty, you must submit a registration card. Advance hardware exchange is available during the first year; thereafter, return the hub to 3Com for repair. The lifetime limited warranty is not offered where restricted or prohibited by law. See warranty card for full details.

*For more warranty information, see box this page.

Quick Reference Guide to 3Com Hubs

	Part Number	Media Options	Backbone or Main Ring Connections	Maximum User Ports	Network Management	Special Options
Ethernet Hubs Stackable Hubs						
SuperStack II Hub 10 12-Port TP	3C16670A	UTP, STP	AUI, TP, BNC, ST fiber	13 (1 unit) 104 (8 units)	SNMP RMON	Transceiver Interface Module, Management Module, Bridge MicroModule, Uninterruptible Power System
SuperStack II Hub 10 24-Port TP	3C16671A	UTP, STP	AUI, TP, BNC, ST fiber*	25 (1 unit) 208 (8 units)	SNMP RMON	Same as above
SuperStack II Hub 10 6-Port Fiber	3C16665A	ST fiber	AUI, TP, BNC,	7 (1 unit)	SNMP RMON	Same as above
SuperStack II Hub 10 24-port Telco	3C16672A	Telco TP	AUI, TP, BNC, ST fiber*	25 (1 unit) 200 (8 units)	SNMP RMON	Same as above
SuperStack II Port Switch Hub 12-Port TP	3C16405	UTP, STP	AUI, TP, BNC, ST fiber*	14 (1 unit) 140 (10 units)	SNMP RMON	2 Transceiver Interface Modules, Bridge MicroModule, Management Module
SuperStack II Port Switch Hub 24-Port TP	3C16406	UTP, STP	AUI, TP, BNC, ST fiber*	26 (1 unit) 260 (10 units)	SNMP RMON	2 Transceiver Interface Modules, Bridge MicroModule, Management Module
LinkBuilder FMS Coax	3C1625-0	Coax (BNC)	AUI, TP, BNC, ST fiber*	12 (1 unit) 48 (4 units)	SNMP RMON	Transceiver Interface Module Bridge MicroModule
Fast Ethernet Hub Stackable Hub						
SuperStack II Hub 100 12-Port 100BASE-TX	3C250-TX/IA	UTP	UTP, SC fiber	13 (1 unit) 104 (8 units)	SNMP RMON	Transceiver Interface Module, Uninterruptible Power System
SuperStack II Hub 100 12-Port 100BASE-T4	3C250-T4	UTP	UTP, SC fiber	13 (1 unit) 104 (8 units)	SNMP RMON	Transceiver Interface Module, Uninterruptible Power System
Token Ring Hubs Stackable Hubs						
SuperStack II Hub TR 12-Port	3C510510B	UTP, STP, fiber	UTP, STP, fiber	260	SNMP RMON	RMON Management Agent Module, RI/RO Expansion Modules (fiber and copper), Uninterruptible Power System, Roving RMON
SuperStack II Hub TR 24-Port	3C510511B	UTP, STP, fiber	UTP, STP, fiber	260	SNMP RMON	RMON Management Agent Module, RI/RO Expansion Modules (fiber and copper), Uninterruptible Power System, Roving RMON
Ethernet Hubs OfficeConnect Hubs						
OfficeConnect Hub 8/TPO	3C16700	UTP	UTP	8 ports (1 unit) 28 ports (4 units)	No	Part of the OfficeConnect family of small office productivity solutions, including switches, access routers, and print, fax, and CD-ROM servers
OfficeConnect Hub 8/TPC	3C16701	UTP	UTP, BNC	8 ports (1 unit) 28 ports (4 units) 210 ports (30 units with coax)	No	Same as above
OfficeConnect Hub 8/TPM	3C16710	UTP	UTP, BNC	Same as above	No	Same as above, and Transcend Quick Configuration Manager
OfficeConnect Hub 8/TP100	3C16720	UTP	UTP	8 ports (1 unit) 28 ports (4 units)	No	Same as Hub 8/TPO
Multi-Function Hubs High Functionality, Chassis-Based Hubs						
ONcore Integrated System 17-slot	3C96017C-A 3C96017C-AP 3C96017C-AC	UTP, STP, Coax (BNC), fiber	UTP, STP, AUI, BNC, fiber, ST fiber, 100 multimode fiber, 155 multimode fiber	612 Ethernet, 340 Token Ring, 64 FDDI, 32 ATM (100 Mbps)	SNMP RMON	Multiple backplanes Ethernet-ATM switching Ethernet-FDDI switching
ONcore Integrated System 10-slot	3C96010C-A 3C96010C-AP 3C96010C	UTP, STP, Coax (BNC), fiber	UTP, STP, AUI, BNC, fiber, ST fiber, 100 multimode fiber, 155 multimode fiber	360 Ethernet, 200 Token Ring, 40 FDDI, 32 ATM (100 Mbps)	SNMP RMON	Multiple backplanes Ethernet-ATM switching Ethernet-FDDI switching
ONcore Integrated System 7-slot	3C96007CH-A 3C96007CH-AP	UTP, STP, Coax (BNC), fiber	UTP, STP, AUI, BNC, fiber, ST fiber	252 Ethernet, 140 Token Ring, 20 FDDI	SNMP RMON	Multiple backplanes Ethernet-FDDI switching Fault-tolerant architecture
ONline System Concentrator 17-slot	3C95017C-LS 3C95017C	UTP, STP, Coax (BNC), fiber	UTP, STP, AUI, BNC, fiber, ST fiber, 100 multimode fiber	360 Ethernet, 140 Token Ring, 32 FDDI	SNMP RMON	Electronic Patch Panel Port Switching
ONline System Concentrator 6-slot	3C95006C-HC 3C95006C-HC-FT	UTP, STP, Coax (BNC), fiber	UTP, STP, AUI, BNC, fiber	144 Ethernet, 60 Token Ring, 16 FDDI	SNMP RMON	Electronic Patch Panel Port Switching
LinkBuilder MSH 11-slot	3C18040 3C18041	UTP, STP, Coax (BNC), fiber	UTP, STP, AUI, BNC, fiber	264	SNMP RMON	Ethernet and Token Ring bridging, FDDI and Ethernet-to-FDDI switching
FDDI Hub Chassis-Based Hub						
LinkBuilder FDDI 4-slot	3C780	UTP, STP, fiber	FDDI fiber	24	SMT 7.3 SNMP	N/A

*An additional port for AUI (male and female), TP, BNC, or ST fiber connections via a transceiver interface module is available.

Complete Solutions for Network Growth

From the desktop to the corporate WAN and the World Wide Web, 3Com provides innovative solutions to expand network speed and reach. Our solutions deliver great performance at every level: workgroups, building and campus LANs, WAN backbones, remote sites, home offices, and wherever mobile users plug in and log on.

What's more, we give you Networks That Go the Distance.™ Meaning step-by-step growth, simplified management, and value that lasts. With 3Com networks, you can expand connections without multiplying complexity and add new performance features without jeopardizing past investments.

At the heart these benefits is Transcend Networking. It is 3Com's strategic roadmap and technology highway to our guiding vision of pervasive global data networking—the ability to link all users, anytime, anywhere. Transcend

Networking architecture makes the vision real.

Product areas under the Transcend framework include integrated management, NICs, wiring hubs, switches, routers, remote and Internet access devices, and more. Our products span the full range of networking technologies, protocols, transmission media, and budgets.

The company behind these advantages has over 16 years of experience in providing local and wide area (LAN and WAN) solutions. 3Com Corporation today is among the world's largest and fastest growing data networking companies. We combine cutting-edge research and development with world-class manufacturing facilities and an international service and support infrastructure. With more than 70 offices in 30 countries serving over 25 million network users, we provide network solutions where they're needed.



3Com Transcend management applications support virtual networks, adding a new dimension to administrative capabilities

SuperStack II products go beyond hubs to let you install complete stackable solutions and fault-tolerant redundant power

OfficeConnect clip-together systems put hub, switch, print-server, CD server, fax-server, and router functions on your desktop—affordably.

Network interface cards and modems from 3Com set industry standards for performance, reliability, and functionality



From compact desktop products to fail-safe multi-technology platforms, our hubs provide comprehensive choices to serve you



Based on 3Com ASICs, our switches deliver unmatched flexibility, functionality, and performance, at very competitive prices



Routers and remote access servers from 3Com speed data and applications to mobile users and distant offices



Terminals and other RS-232 devices gain access to LAN resources with reliable, full-featured 3Com terminal servers



Our service expertise encompasses network information, education, consulting, maintenance, and support

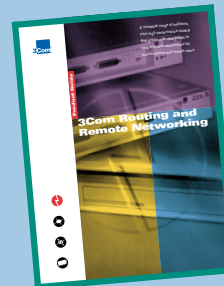
Other 3Com Product Guides



Guide to Switching
Wherever your network needs a bandwidth boost, there's a 3Com switching solution to suit every requirement and budget. 3Com supplies a complete range of switches for different areas of your network, from the power user's desktop to the enterprise data center.



Guide to 3Com Desktop and Portable Network Interface Cards
No matter how complex your network, 3Com has the right network interface card for it. 3Com's network interface cards lead the industry in price/performance, manageability, ease of use, and reliability.



Guide to Routing and Remote Networking
From the desktop to the corporate WAN and the World Wide Web, 3Com offers innovative routing and remote solutions for incremental growth, extended reach, and scalable performance.



3Com Corporation has helped more than 25 million people gain access to critical information through high-speed networks. Designed to serve large enterprises, small offices and homes, 3Com products provide a scalable architecture to meet the connectivity needs of today's users. With research and development on three continents, 3Com is one of the data networking industry's largest and fastest growing companies. 3Com's innovative manufacturing, marketing, sales and support simplify communication, optimize network reliability and protect customer investments.

3Com Corporation

P.O. Box 58145
5400 Bayfront Plaza
Santa Clara, CA
95052-8145
Phone: 800-NET-3Com
or 408-764-5000
Fax: 408-764-5001
World Wide Web:
<http://www.3com.com>

3Com ANZA

ANZA East
Phone: 61 2 9937 5000
Fax: 61 2 9956 6247
ANZA West
Phone: 61 3 9866 8022
Fax: 61 3 9866 8219

3Com Asia Limited

Beijing, China
Phone: 86 10 68492 568
Fax: 86 10 68492 789
Shanghai, China
Phone: 86 21 6374 0220
Ext. 6115
Fax: 86 21 6355 2079
Hong Kong
Phone: 852 2501 1111
Fax: 852 2537 1149
India
Phone: 91 11 644 3974,
644 6123
Fax: 91 11 623 3192

Indonesia

Phone: 62 21 523 9181
Fax: 62 21 523 9156

Korea

Phone: 82 2 319 4711
Fax: 82 2 319 4710

Malaysia

Phone: 60 3 732 7910
Fax: 60 3 732 7912

Singapore

Phone: 65 538 9368
Fax: 65 538 9369

Taiwan

Phone: 886 2 377 5850
Fax: 886 2 377 5860

Thailand

Phone: 662 231 8151 4
Fax: 662 231 8153

3Com Benelux B.V.

Belgium
Phone: 32 2 725 0202
Fax: 32 2 720 1211

Netherlands

Phone: 31 30 6029700
Fax: 31 30 6029777

3Com Canada

Calgary
Phone: 403 265 3266
Fax: 403 265 3268

Montreal

Phone: 514 874 8008
Fax: 514 393 1249

Ottawa

Phone: 613 566 7055
Fax: 613 233 9527

Toronto

Phone: 416 498 3266
Fax: 416 498 1262

Vancouver

Phone: 604 434 3266
Fax: 604 434 3264

3Com European HQ

Phone: 44 1628 897000
Fax: 44 1628 897041

3Com France

Phone: 33 1 69 86 68 00
Fax: 33 1 69 07 11 54

3Com GmbH

Austria
Phone: 43 1 513 4323
Fax: 43 1 513 4323 20

Czech and Slovak Republics

Phone: 42 2 21845 800
Fax: 42 2 21845 811

Berlin, Germany

Phone: 49 30 3498790
Fax: 49 30 34987999

Munich, Germany

Phone: 49 89 627320
Fax: 49 89 62732168

Hungary

Phone: 36 20 394 695
Fax: 36 1 274 4281

Poland

Phone: 48 22 6451351
Fax: 48 22 6451352

Switzerland

Phone: 41 31 996 14 14
Fax: 41 31 996 14 10

3Com Ireland

Phone: 353 1 820 7077
Fax: 353 1 820 7107

3Com Japan

Phone: 81 3 3345 7251
Fax: 81 3 3345 7261

3Com Latin America

U.S. Headquarters

Phone: 408-764-6075
Fax: 408-764-5730

Argentina

Phone: 54 1 814 1391
Fax: 54 1 815 7165

Brazil

Phone: 55 11 546 0869
Fax: 55 11 246 6813

Chile

Phone: 56 2 633 9242
Fax: 56 2 633 4338

Mexico

Phone: 52 5 520 7841
Fax: 52 5 520 7837

3Com Northern Latin

America

Miami, Florida

Phone: 305-261-3266
Fax: 305-261-4901

Colombia

Phone: 57 1 616 2884
Fax: 57 1 618 4534

Peru

Phone: 51 1 221 5399
Fax: 51 1 221 5499

Venezuela

Phone: 58 2 953 8122
Fax: 58 2 953 9686

3Com Mediterraneo

Milan, Italy

Phone: 39 2 253011
Fax: 39 2 27304244

Rome, Italy

Phone: 39 6 5922769
Fax: 39 6 5918969

Spain

Phone: 34 1 3831700
Fax: 34 1 3831703

3Com Middle East

Phone: 971 4 349049
Fax: 971 4 349803

3Com Nordic AB

Denmark

Phone: 45 39 27 85 00
Fax: 45 39 27 08 44

Finland

Phone: 358 0 435 420 67
Fax: 358 0 435 422 00

Norway

Phone: 47 22 18 40 03
Fax: 47 22 18 23 85

Sweden

Phone: 46 8 632 56 00
Fax: 46 8 632 09 05

3Com South Africa

Phone: 27 11 807 4397
Fax: 27 11 803 7405

3Com UK Ltd.

Edinburgh

Phone: 44 1312 208228
Fax: 44 1312 261410

Manchester

Phone: 44 1618 737717
Fax: 44 1618 738053

Marlow

Phone: 44 1628 897000
Fax: 44 1628 897003

To learn more about 3Com products, visit our World Wide Web site at <http://www.3com.com>.

3Com Corporation 1996. All rights reserved. 3Com is a publicly owned corporation (NASDAQ:COMS). 3Com, Boundary Routing, LANplex, LinkBuilder, NETBuilder, NETBuilder II, ONcore, SmartAgent, SuperStack, and Transcend are registered trademarks; and FDDILink, FMS, Focus, LinkConverter, LinkSwitch, MSH, Networks That Go the Distance, ONline, Power Grouping, and RingBuilder are trademarks of 3Com Corporation. Unless otherwise indicated, 3Com registered trademarks are registered in the United States and may or may not be registered in other countries. NETBuilder is also a registered trademark of 3Com Corporation in France. Boundary Routing is also a registered trademark of 3Com Corporation in Austria, Belgium, Denmark, France, Germany, Luxembourg, Netherlands, Norway, Spain, Sweden, Switzerland, and the United Kingdom. SuperStack is also a registered trademark of 3Com Corporation in Denmark and France. AppleTalk is a registered trademark of Apple Computer, Inc. Banyan and VINES are registered trademarks of Banyan Systems, Inc.

Cnet is a registered trademark of Digital Equipment Corporation. IBM, NetView and AS/400 are registered trademarks of International Business Machines Corp. Novell and NetWare are registered trademarks of Novell, Inc. OpenView is a registered trademark of Hewlett-Packard Company. SunNet is a trademark of Sun Microsystems, Inc. UNIX is a registered trademark of UNIX System Laboratories, Inc. Microsoft and Windows are registered trademarks of Microsoft Corp. Other brand and product names may be trademarks or registered trademarks of their respective owners. All specifications are subject to change without notice.



Printed in U.S.A. on recycled paper

100113-007 9/96